

# To log in to your Web App account:

1.

The screenshot shows a web browser window displaying the library website for Sandwich Technology School. The browser's address bar shows the URL <https://uk.accessionline/snd01/#/dashboard>. The website header includes the school name and a navigation menu with options like Home, Visual Search, Quick Lists, Reserves, My List, and Print. A search bar is also present. The main content area features a banner with the text "CAUGHT READING?" and silhouettes of two people. Below the banner, there is a carousel of book covers, including "My Name Is Why: a memoir" and "A Series of Unfortunate Events". In the top right corner of the website, the user is identified as "Guest". A white callout arrow with a blue border points from the text below to the "Guest" user name.

Click the arrow next to the word 'Guest' in the top right corner of the page

# To log in to your Web App account:

2.

Sandwich Technology School

Guest

Search Home Visual Search Quick Lists Reserves My List Print

**Click the blue box 'Login via SSO' (SSO means 'Single Sign On')**

Login via SSO

Borrower Name: N/A  
User Profile: Guest

Borrower ID or User ID

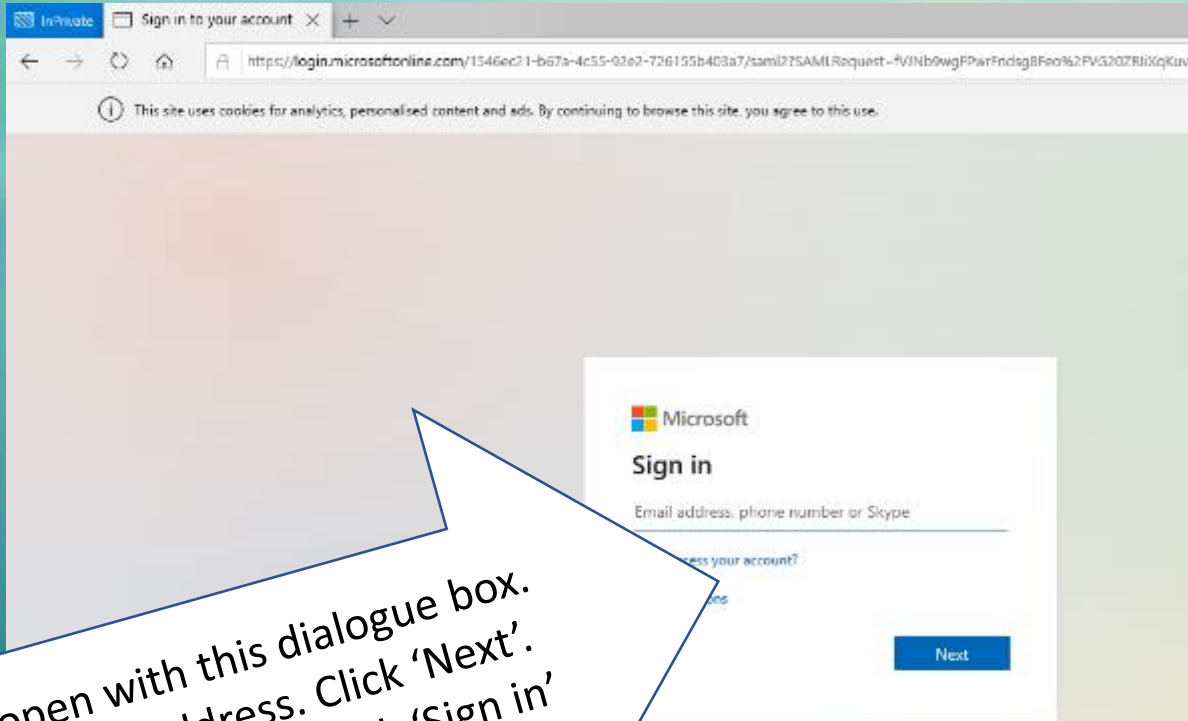
Password/PIN

Login

Clear all data

# To log in to your Web App account:

3.



A new window will open with this dialogue box.  
Enter your SCHOOL email address. Click 'Next'.  
Enter your usual school password. Click 'Sign in'

Your school email address is your username (e.g. 20smitha) followed by @sandwich-tech.kent.sch.uk

e.g.

[20amitha@sandwich-tech.kent.sch.uk](mailto:20amitha@sandwich-tech.kent.sch.uk)

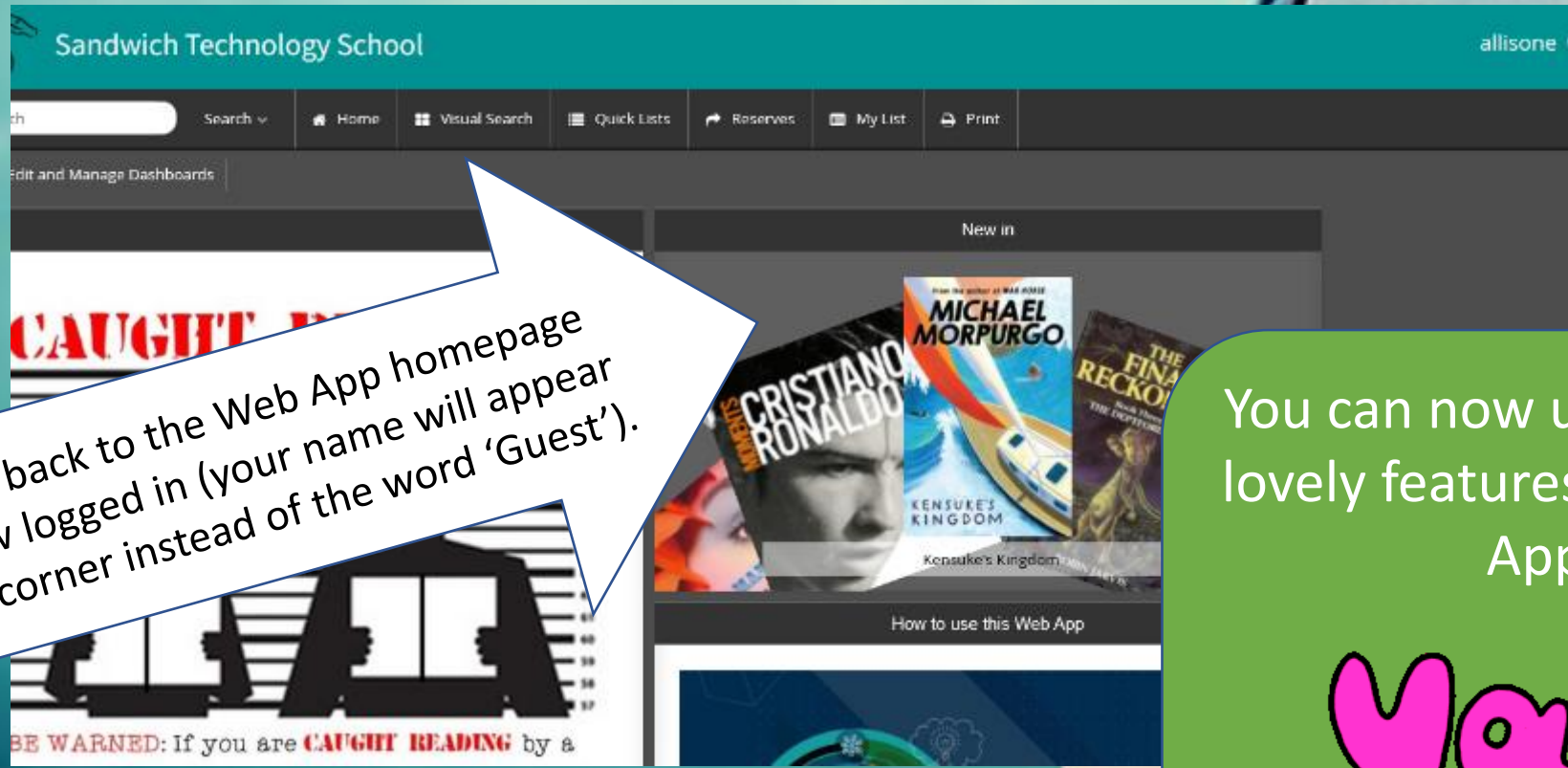
**If you are unsure of your username or email address – ask your tutor to help you.**

**It might help you to write it down in your log book.**

# To log in to your Web App account:

4.

You will be sent back to the Web App homepage and you are now logged in (your name will appear in the top right corner instead of the word 'Guest').



You can now use all of the lovely features in the Web App!

**yay!**